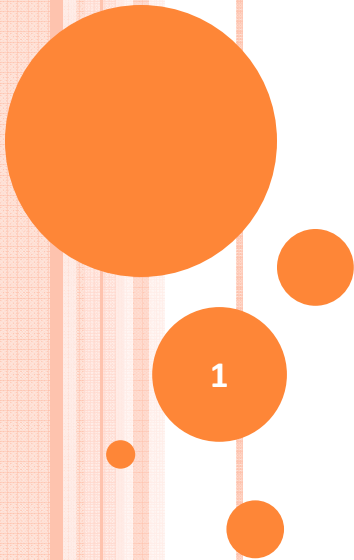




gcir
1990-2015

CASE STUDIES ON COLLABORATIVE, COMMUNITY-ENGAGED GRANTMAKING



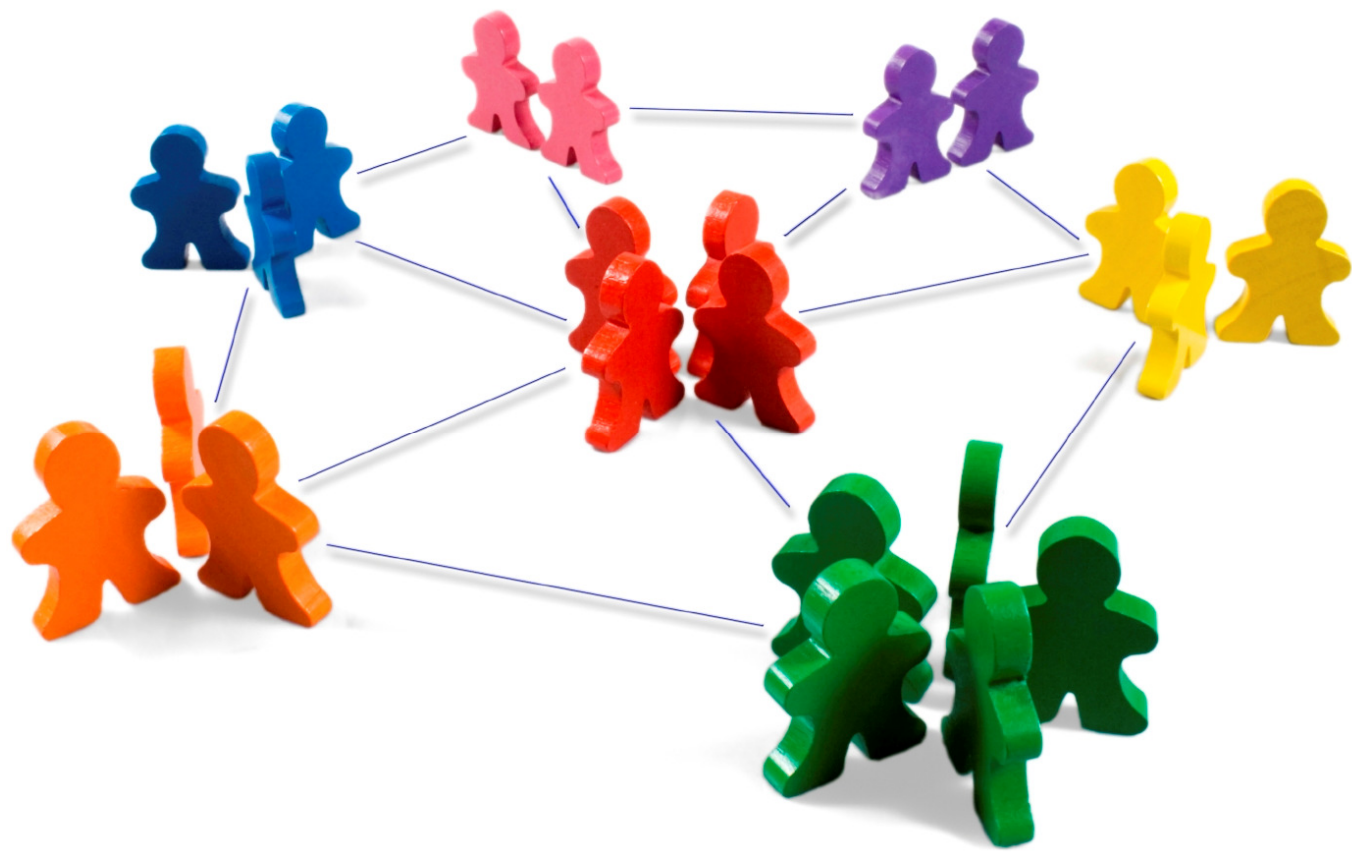
2016 Delivering on the Dream (DOTD) Collaborative Sites



Statewide
Major Metros

- Arkansas
- California
 - San Francisco Bay Area
 - Los Angeles County
 - Orange County
- Colorado
- Connecticut
- Illinois
- Missouri
 - Kansas City
- New York Metro
 - Greater Houston
 - Statewide
- North Carolina
- Oregon
- Pennsylvania
- Tennessee
- Texas

REAL ESTATE AND PHILANTHROPY



TALE OF TWO SITES

Houston Immigration Legal Services Collaborative



PA is Ready!

HOUSTON CONTEXT

- Timing of issues
- Clear need established by data and environmental scan
- Shared city-wide
- Past experience with funder-only collaboratives
- Antagonistic nonprofit environment

HOUSTON SET UP

- Houston Endowment and Simmons Foundation leadership; pooled funding of 2 foundations
- HILSC - collaborative of 40+ organizations
 - funders, legal service providers, grassroots community nonprofits, law schools, attorneys
- Executive committee oversees operations & implementation
- Consultant to support development of city-wide decision and community plan
- Goals:
 - Build legal capacity
 - Coordination and collaboration to strengthen safety net
 - Communications plan to reach community

HOUSTON IMMIGRATION LEGAL SERVICES COLLABORATIVE



HOUSTON BEST PRACTICES

- Start meetings with city-level goal/vision:
 - Every low income Houstonian has access to legal services
- *Right* consultant and facilitator
- Keep the target beneficiaries in mind
- Big tent attitude
- Relationships matter!
 - facilitator/coordinator always follows up
- Funder participation and engagement is key

PENNSYLVANIA CONTEXT

- Timing of issues
- Clear community need backed by research
- PA Immigrant & Citizenship Coalition and The Philadelphia Foundation, strong history
- Established group of providers in major cities with track record of success

PENNSYLVANIA SET UP

- Philadelphia Foundation leadership; pooled funding of 7 foundations
- PA is Ready! - collaborative of 40+ organizations
 - legal service providers, funders, grassroots community nonprofits, law schools, attorneys.
- Funder learning collaborative of 7 foundations
- Goals:
 - Build statewide capacity to provide immigration assistance
 - Prevent the exploitation of immigrants through immigration (or “notario”) fraud
 - Screen and enroll as many eligible immigrants as possible
 - Build immigrant leadership and organizing capacity to engage in local, state and federal immigrant rights campaigns
 - Reach the diverse immigrant communities eligible for DACA and DAPA

PA IS READY!



PENNSYLVANIA LESSONS LEARNED

- Challenges to statewide work
 - geographic, ethnic, capacity, and technological equity and representation
- Forming/Storming –
 - Nonprofit coalition met frequently to decide service delivery models and technical aspects.
 - Need more relationship building at beginning to establish ground rules for working together
 - Need to discuss community perceptions of power based on who receives funding and possible community relations issues
 - Funder balancing act to guide without taking the lead

PENNSYLVANIA BEST PRACTICES

- Radical transparency important with coalition
- Grantmaking review benefits from funders and those “on the ground”
- Pairing providers strengthens grants and learning
- Funders should be open, willing to share power, step back/forward!
 - Projects that try to empower marginalized communities require experimentation and risk
 - Capacity building orientation for funders and nonprofits
 - Funder briefings with nonprofit partners - builds relationships; deepen cross-sector and issue understanding for all

TAKEAWAYS?

- Data establishes need, capacity, and opportunity; share it broadly
- Values and vision-based conversations internally at foundations and with community members
- Sensitivity to local relationships and funding dynamics
- Create big tent attitude
- External, neutral party to facilitate, coordinate, provide TA
- Explicit discussions about working together, power sharing, radical transparency
- Long-term commitment on all parts

YOUR QUESTIONS & THOUGHTS



SILLERMAN CENTER STUDIES

- Examples of community-engaged and immigrant-integration grantmaking
 - Headwaters Foundation
 - Unbound Philanthropy

the Sillerman Center
FOR THE ADVANCEMENT OF PHILANTHROPY

ADDITIONAL RESOURCES FOR FUNDERS:



- Resource documents:
 - GCIR Funders Guide: Grants and Immigration Status
 - GCIR Immigrant Integration Toolkit (available online)
- Access GCIR's online publications, join upcoming webinars
- Get connected to funding peers in other states about grantmaking strategies
- For more information, contact Althea Gonzalez, Project Manager, althea@gcir.org

SMALL GROUP QUESTIONS

- How do the case studies relate to your context?
- What ideas were most energizing?
- How could they be applied locally?
- What would it take to implement?